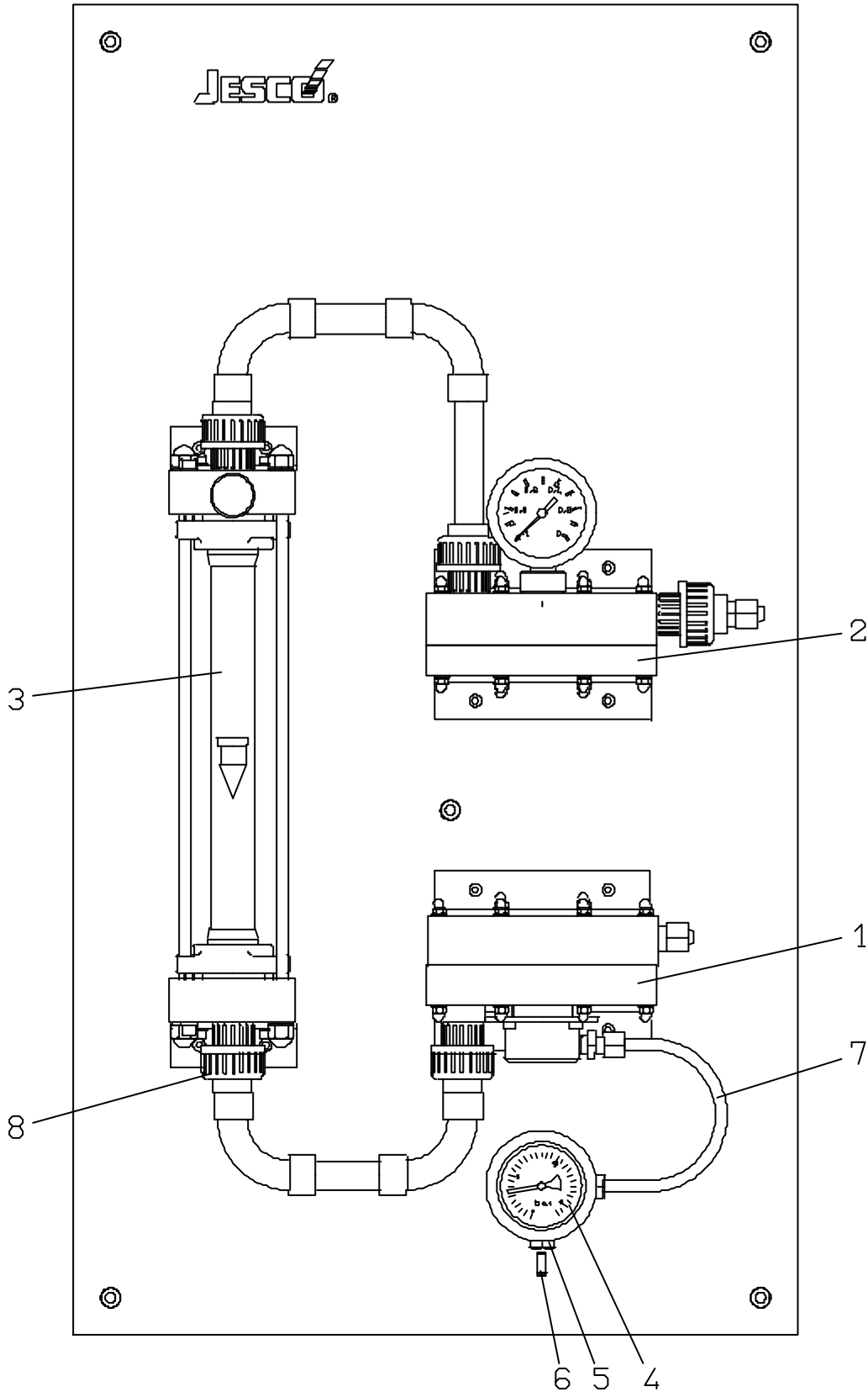
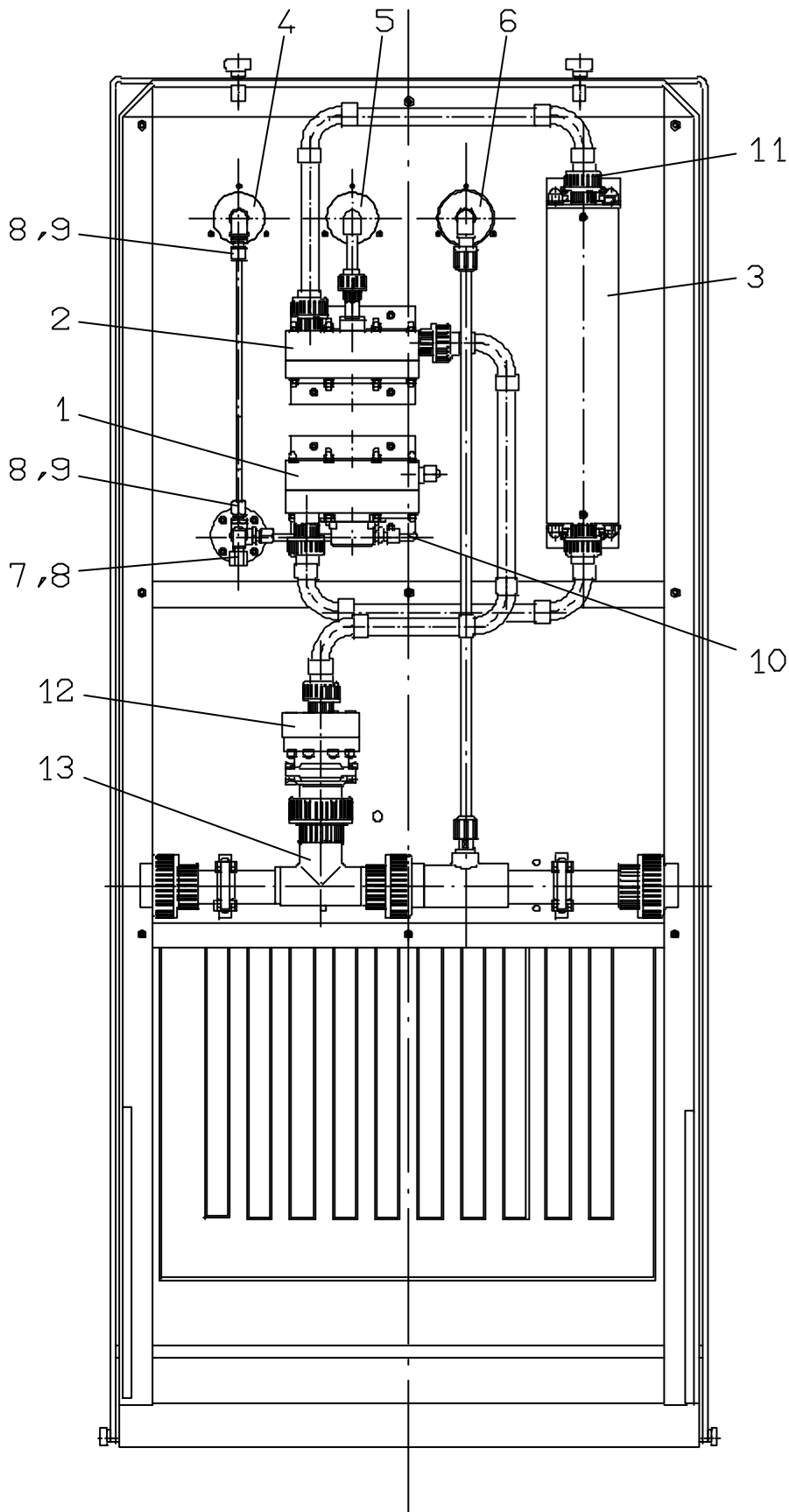


# Chlorinator C 2525

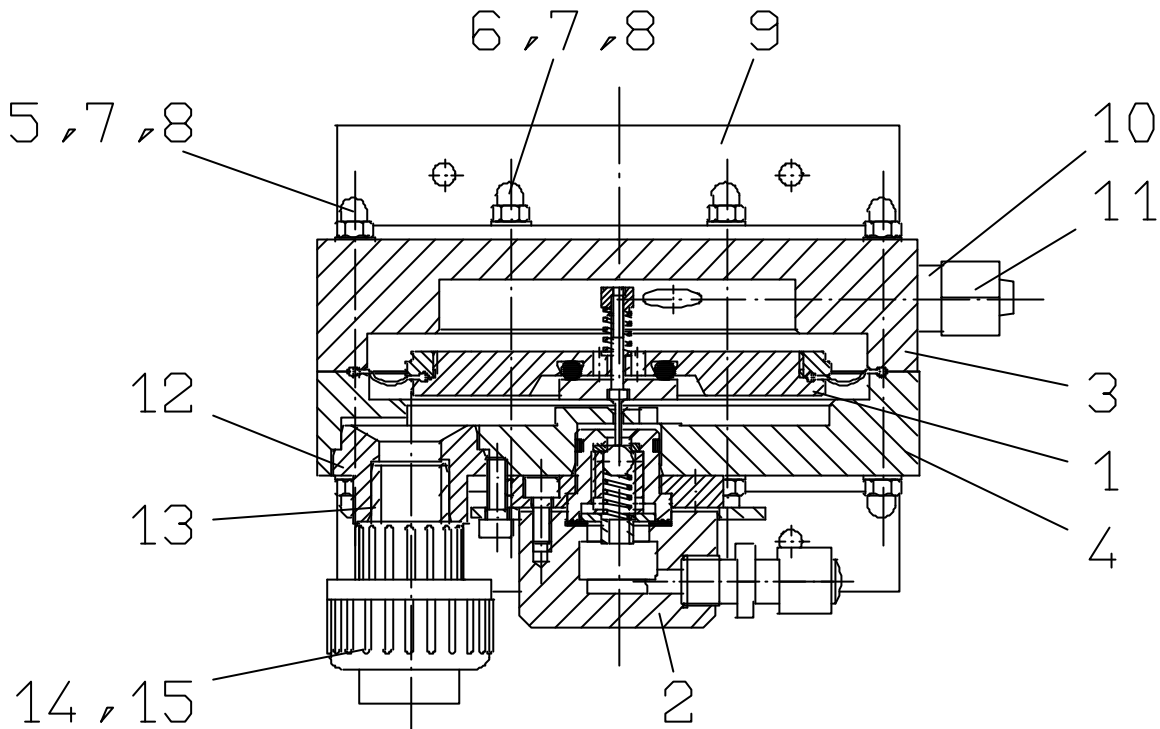


Item	Description	Qty.	5 kg/h	10 kg/h	15 kg/h	25 kg/h
1	Vacuum regulator C2525-V (see ET 2 02 25 / 5)	1	20231834			
2	Backpressure regulator C2525-H (see ET 2 02 25 / 6) incl. vacuum gauge	1	20231835			
3	Measuring glass incl. holder (see ET 2 02 25 / 9)	1	29274	29275	29276	31863
4	Gauge 0...16 bar for chlorine gas	1	24087129			
5	Cutting ring connector for copper pipe d 8mm	3	82193			
6	Supporting sleeve for copper pipe d 8x1mm	3	88180			
7	Ellbow d 8x1mm	1	34837			
8	O-ring for screwing DN15/d20	5	80075			
Complete unit C 2525 / WL without ejector and non-return valve			20233530	20233531	20233532	20233533
Spare parts kit for C 2525 without ejector and non-return valve			33578			
Complete unit C 2525 / WL incl. ejector and non-return valve			20232422	20232423	20232424	20232425
Spare parts kit for C 2525 incl. ejector and non-return valve			34612			



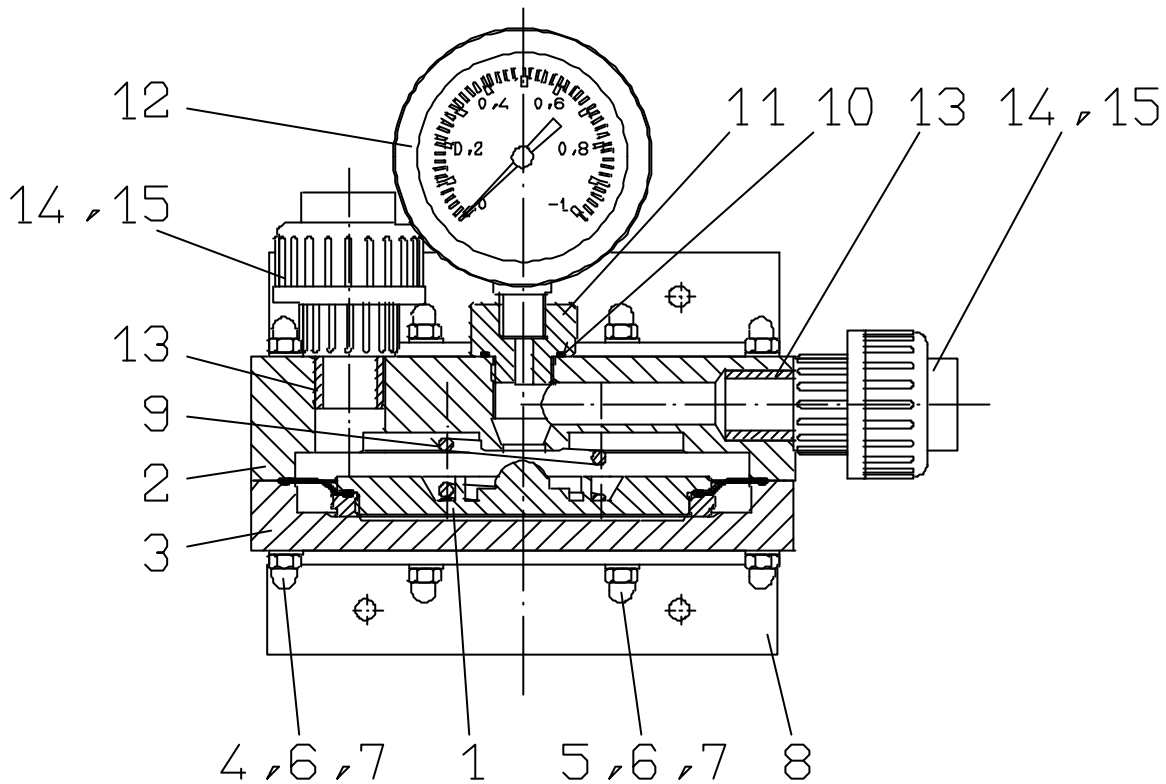
# Chlorinator C 2525

Item	Description	Qty.	5 kg/h	10 kg/h	15 kg/h	25 kg/h
1	Vacuum regulator C2525-V (see ET 2 02 25 / 5)	1	20231834			
2	Backpressure regulator C2525-H (see ET 2 02 25 / 6) incl. vacuum gauge	1	32615			
3	Measuring glass incl. holder (see ET 2 02 25 / 9)	1	27477	27478	27479	32595
4	Gauge 0...16 bar for chlorine gas	1	87386			
5	Gauge -1...0 bar for chlorine gas	1	87387			
6	Gauge 0-16 bar for motive water	1	87385			
7	Angular (90°) cutting ring connector for copper pipe d 8x1mm	1	82184			
8	Supporting sleeve for copper pipe d 8x1mm	5	88180			
9	Straight cutting ring connector for copper pipe d 8x1mm	4	82193			
10	Ellbow d 8x1mm	1	34838			
11	O-ring for connector DN15/d20	6	80075			
12	Ejector non-return valve (see ET 2 32 01)	1	23232920	23232623	23232623	23232623
13	Ejector (see MB 2 31 01)	1	23128948 Type E	23122256 Type C	23122256 Type C	23132451 Type F
Complete unit C 2525 / SL without ejector and non-return valve			20233534	20233535	20233536	20233537
Spare parts kit for C 2525 without ejector and non-return valve			33578			
Complete unit C 2525 / SL incl. ejector and non-return valve			20232426	20232427	20232428	20232429
Spare parts kit for C 2525 incl. ejector and non-return valve			34612			



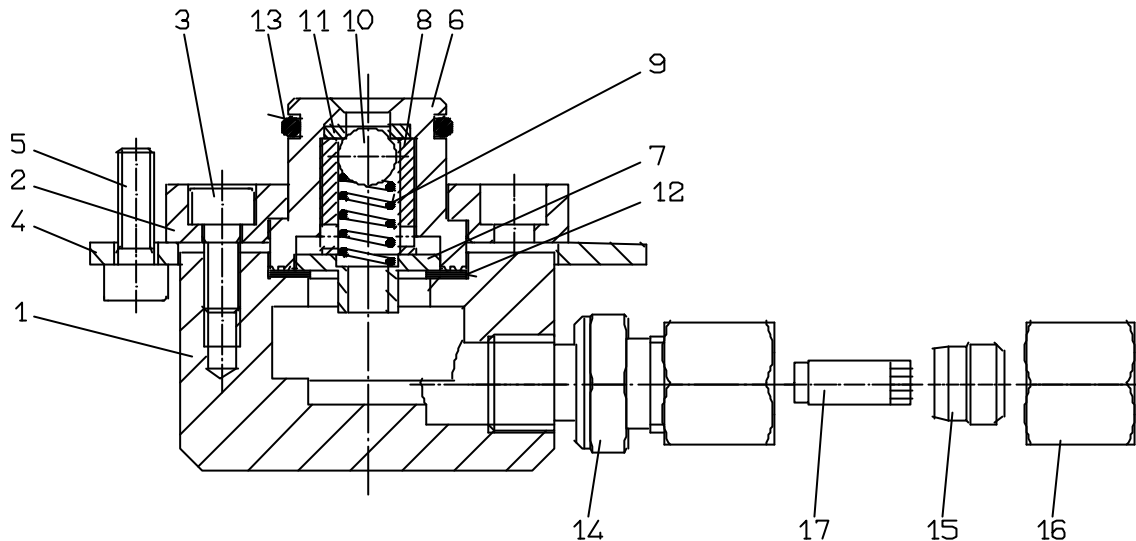
Item	Description	Material	Qty.	Part No.
1	Upper diaphragm disk (see ET 2 02 25 / 8 )	misc.	1	23679
2	Inlet valve assembly (see ET 2 02 25 / 7)	misc.	1	31855
3	Housing, upper part	PVC	1	31854
4	Housing, lower part	PVC	1	31928
5	Bolt M5x74mm	Brass, nickel-plated	6	31859
6	Bolt M5x82mm	Brass, nickel-plated	2	31858
7	Cap nut M5	Brass, chrome-plated	16	83005
8	Washer d 5,3	Brass, nickel-plated	16	84064
9	Mounting bracket	PVC	2	10043
10	Tubing connection	PVC	1	10366
11	Union nut	PVC	1	10365
12	Reducing bushing	PVC	1	31856
13	Piping piece d 20	PVC	1	32617
14	Connector DN15/d20	PVC/Viton	1	88172
15	O-ring for connector	Viton	1	80075
Vacuum regulator assembly for C2525/WL and C2525/SL				20231834

## Backpressure regulator C 2525 - ET 2 02 25 / 6



# Chlorinator C 2525

Item	Description	Material	Qty.	Part No.
1	Upper diaphragm (see ET 2 02 25 / 8 )	misc.	1	10053
2	Housing, upper part	PVC	1	31864
3	Housing, lower part	PVC	1	31857
4	Bolt M5x66mm	Brass, nickel-plated	6	31860
5	Bolt M5x74mm	Brass, chrome-plated	2	31859
6	Cap nut M5	Brass, nickel-plated	16	83005
7	Washer d 5,3	Brass, nickel-plated	16	84064
8	Mounting bracket	PVC	2	10043
9	Pressure spring	Hastelloy	1	13688
10	O-ring	Viton	1	80001
11	Gauge connection	PVC	1	29766
12	Gauge -1...0 bar (for C2525/WL)	misc.	1	24087250
13	Piping piece d 20	PVC	2	32617
14	Connector DN15/d20	PVC/Viton	1	88172
15	O-ring for connector	Viton	1	80075
Vacuum regulator assembly for C 2525/WL (incl. gauge)				20231835
Vacuum regulator assembly for C 2525/SL (without gauge)				32615



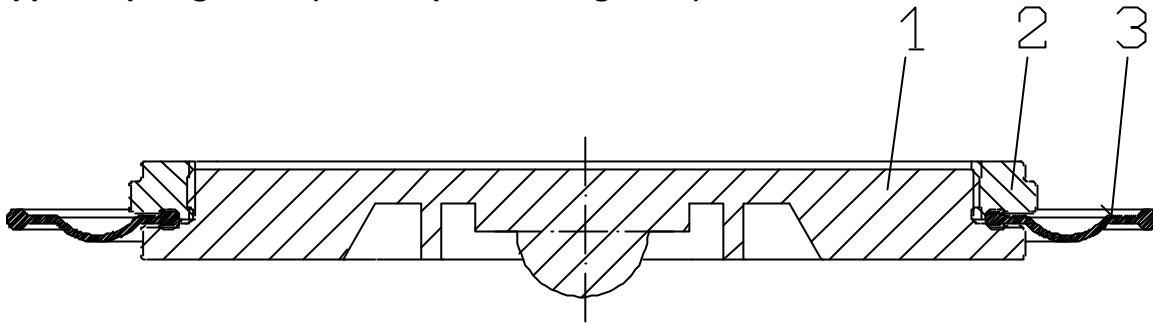
Item	Description	Material	Qty.	Part No.
1	Valve body	Brass, nickel-plated	1	10096
2	Clamping ring	Brass, nickel-plated	1	10028
3	Screw M5x12	A2	4	83606
4	Clamping plate	Brass, nickel-plated	1	10027
5	Screw M5x16	A2	4	83608
6	Valve cap	Monel	1	10029
7	Spring disk	Brass, nickel-plated	1	10035
8	Ball guide	Monel	1	28614
9	Pressure spring	Hastelloy	1	10051
10	Ball	Ceramic	1	10033
11	Valve seat	Viton	1	10032
12	Gasket	AF	1	81001
13	O-ring	Viton	1	80008
14	Cutting ring connector for copper pipe d8	Brass, tin-plated	1	82193
15	Spare cutting ring d8	Brass, tin-plated	1	19973
16	Spare union nut d8	Brass, tin-plated	1	19974
17	Supporting sleeve d 8x1	Brass	1	88180
Inlet valve assembly				31855
Spare parts kit, Pos. 9..13, 15..17				—

## Diaphragm disk

ET 2 02 25 / 8

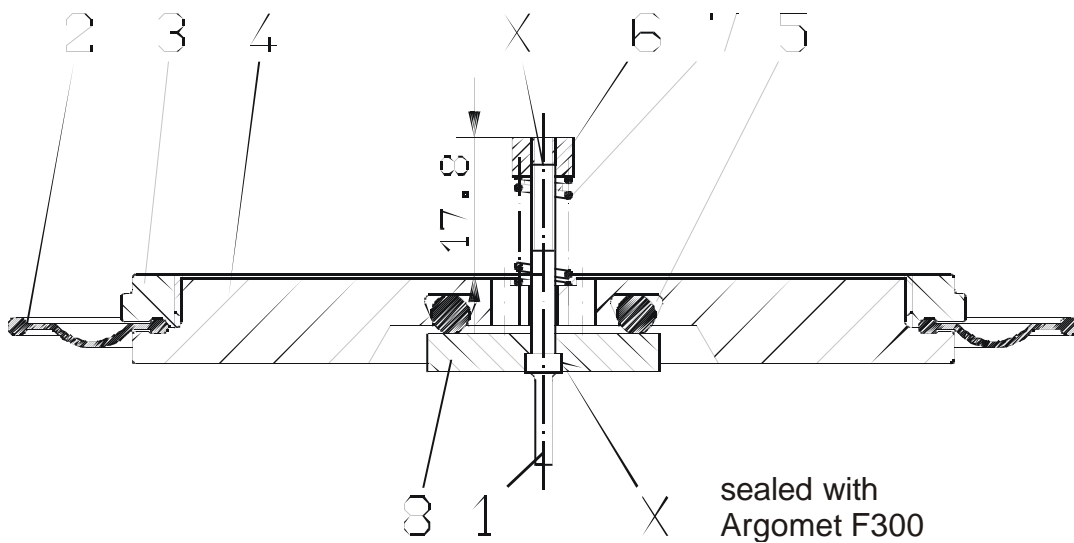
Chlorinator C 2525

### Upper diaphragm disk (for backpressure regulator)



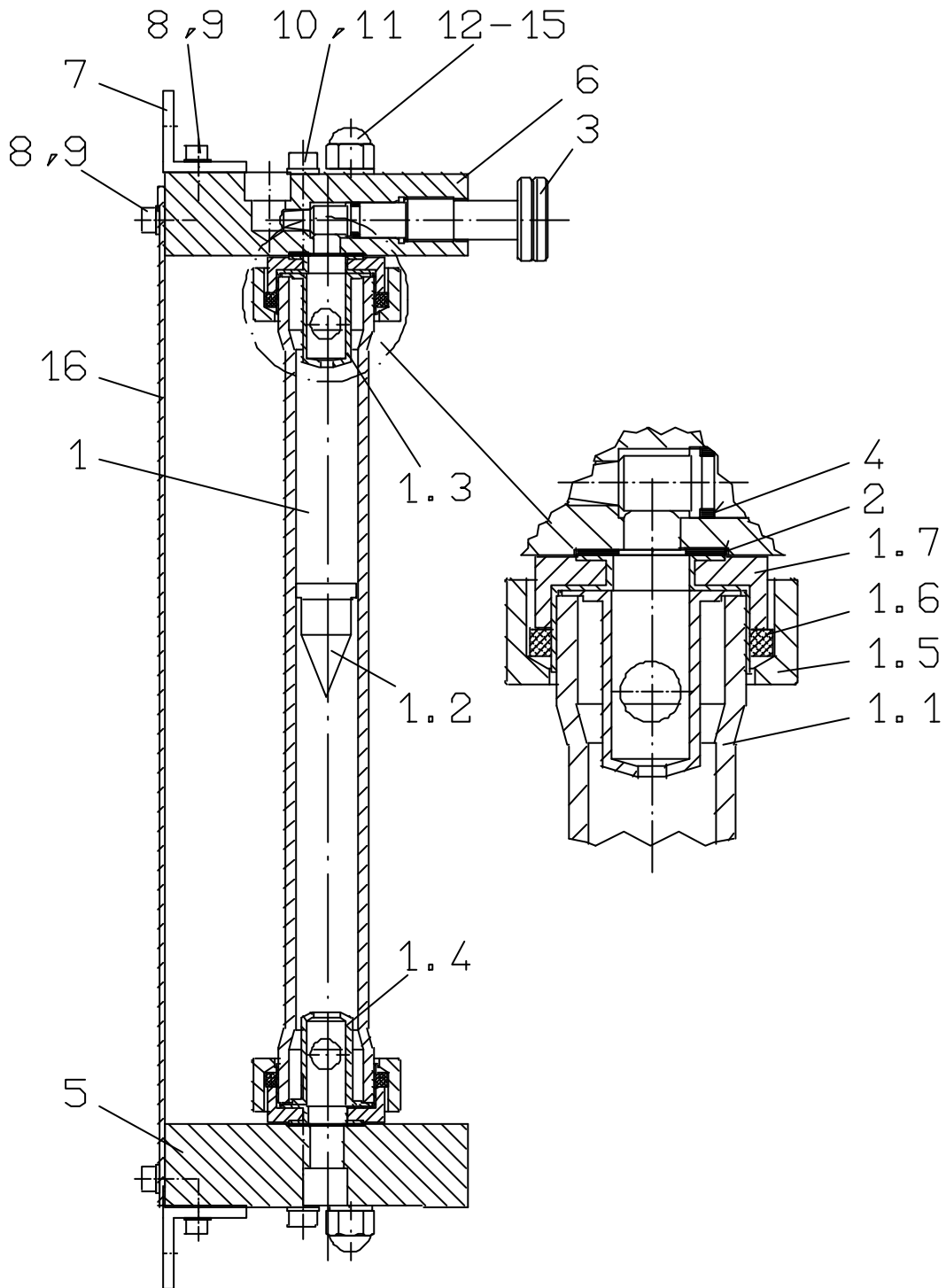
Item	Qty.	Description	Part No.
1	1	Diaphragm disk	10054
2	1	Clamping ring	10055
3	1	Diaphragm	81002
1-3	1	Diaphragm disk assembly, pos. 1-3	10053

### Lower diaphragm disk (for vacuum regulator)



Item	Qty.	Description	Part No.
1	1	Valve pin	15806
2	1	Diaphragm	81002
3	1	Clamping ring	10055
4	1	Diaphragm disk	15803
5	1	O-ring	80601
6	1	Round nut	22134
7	1	Pressure spring	10051
8	1	Valve seat	15805
1-8	1	Diaphragm disk assembly, pos. 1-8	23679





# Chlorinator C 2525

Item	Description	Qty.	5 kg/h	10 kg/h	15 kg/h	25 kg/h
1	Measuring glass with float element, limit stops, sealings and flanges	1	22295	22296	22297	27401
1.1	Glass body	1	23879	23880	23881	27406
1.2	Float element	1	34283	23878		
1.3	Top limit stop	1	23876			
1.4	Bottom limit stop	1	23877			
1.5	Pressure flange	2	23873			
1.6	Tube ring	2	23875			
1.7	Sealing	2	23874			
2	Flat gasket	2	81285			
3	Adjusting screw	1	15789			31926
4	O-ring	1	80013			
5	Inlet block	1	29464			31922
6	Outlet block	1	29465			31923
7	Mounting bracket	2	15528			
8	Screw M5x12	6	83606			
9	Washer d 5,3	6	84164			
10	Cylindric screw M6x45	4	83641			
11	Washer d 6,4	4	84160			
12	Bolt M8x395	2	15529			
13	Nut M8	4	83130			
14	Washer d 8,4	4	84131			
15	Protection cap for nut M8	4	83507			
16	Cover plate (only for cabinet device)	1	27484			
Measuring glass assembly for wall device			29274	29275	29276	31863
Measuring glass assembly for cabinet device			27477	27478	27479	32595