



ROTO PUMPS PERFORMANCE CURVE

Model-M 582

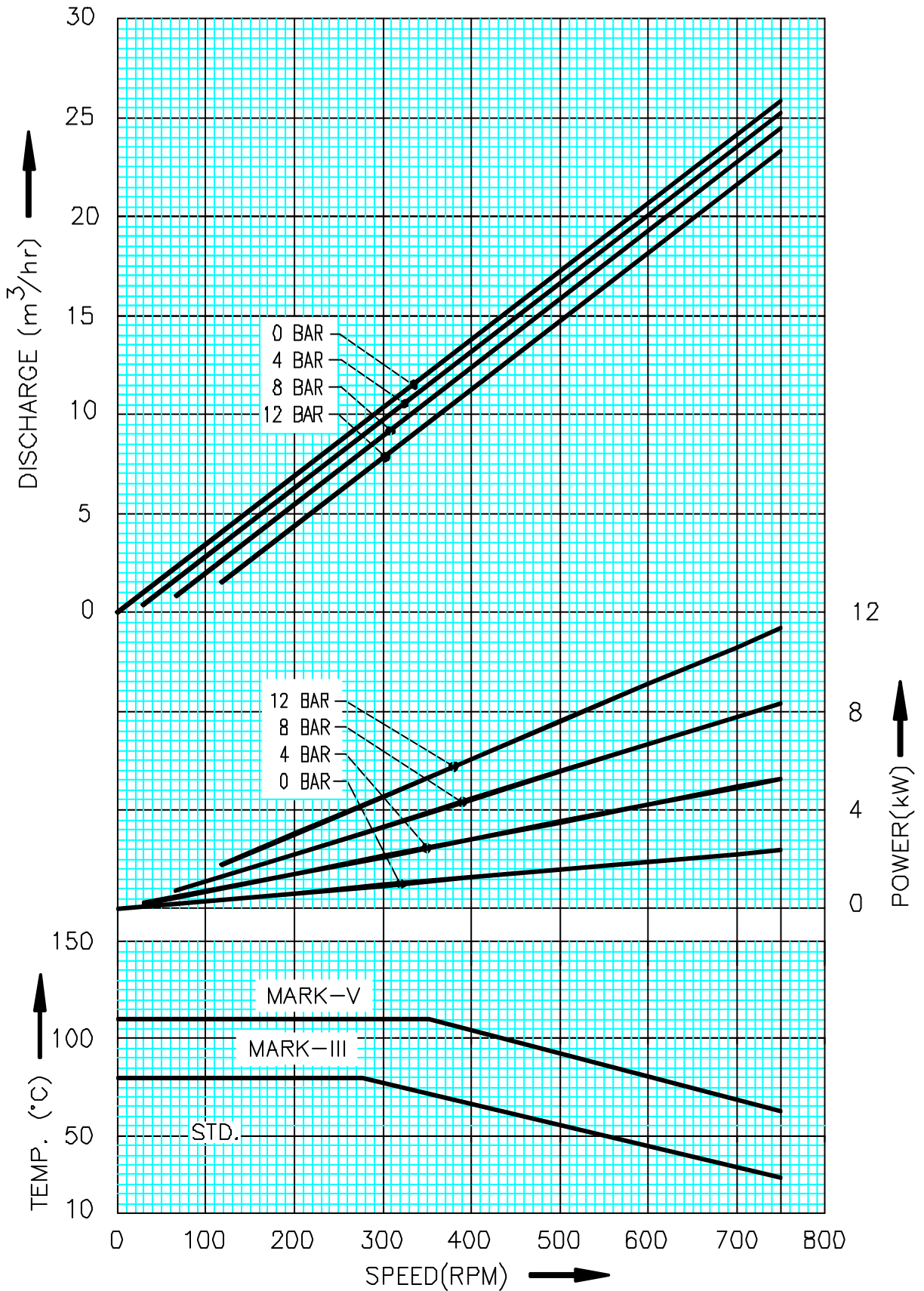
Graph No.RS-190-01

STARTING TORQUE : 103.4 Nm

STATOR HARDNESS : 70° Shore

Tested on water at 30°C for RA & RR stator

Solid handling capacity
Soft & Compressible 40 mm
Hard & Angular 10 mm

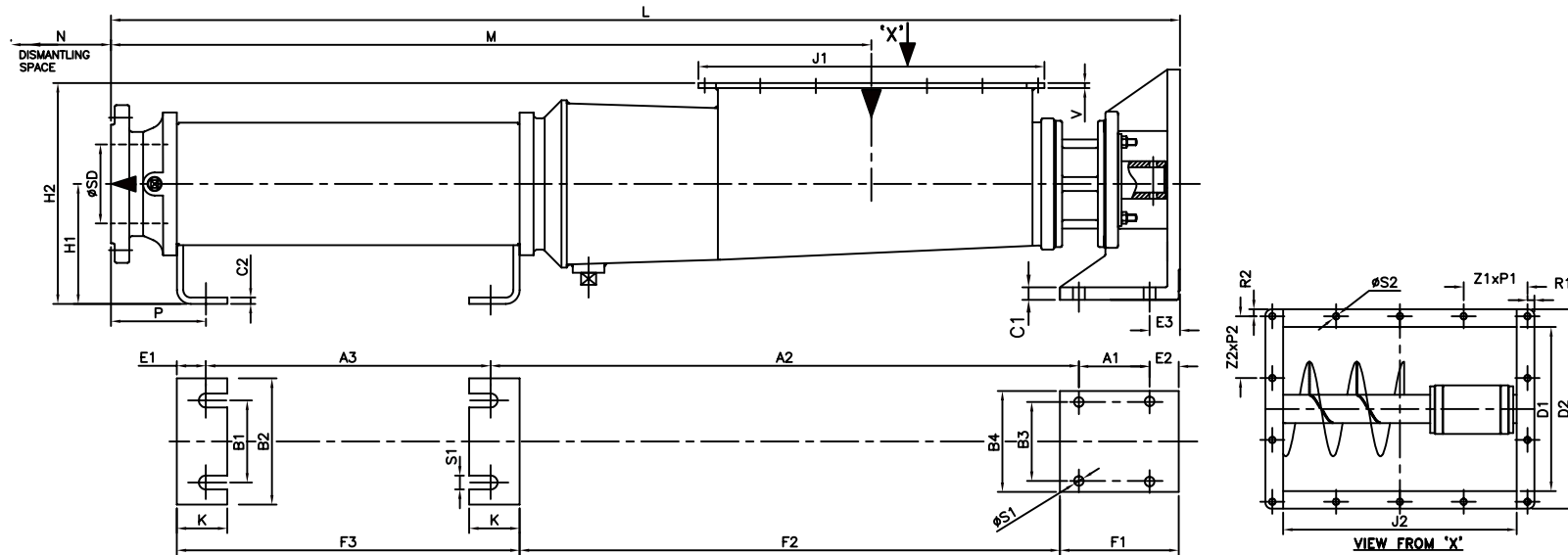


NOTE:- FOR FLUID TEMPERATURE BELOW 10°C REFER TO ROTO



DIMENSIONAL DRAWING OF WMCA SERIES PUMP

DRG. NO.
DD-28-005-01



TYPE AND SIZE OF PUMP	BASIC DIMENSIONS																	HOPPER DIMENSIONS							FLANGE DIMS.		Weight in Kgs.										
	A1	A2	A3	B1	B2	B3	B4	C1	C2	E1	E2	E3	F1	F2	F3	H1	H2	K	L	M	N	P	S1	J1	J2	D1		D2	Z1xP1	Z2xP2	R1	R2	øS2	V	SD	RATING (BAR)	
WMCA-542			433												489				1274	974				340	282	210	268	4x79.5	3x82	11	11			65	#		
WMCA-562		626	509	83	120	125	160	12	8	28	30	32	127	576	565	130	260	44	1350	1050	600	108													100	#	
WMCA-581			260												316				1185	844	700	113	15	426	370	260	316	4x101	3x98								
WMCA-601			316												372				1241	900																	
WMCA-564		757	999											686	1071				2035	1675	1200	162													65	#	
WMCA-582		709	579											638	651				1524	1165	670	121													100	#	
WMCA-584		756	1155											685	1227				2200	1841	1350	174		382	326	293	349	4x90	3x109			11	11	14-ø10			
WMCA-602		709	705	100	150	130	200	16	10	36	33	35	148	638	777	150	310	63	1650	1291	810	121	19													8	#
WMCA-603			1105												1177				2055	1691	1210																
WMCA-621		924	406											853	478				1578	1139	850	135		548	492	300	356	6x88	3x112	10	10	18-ø10		125	#		
WMCA-641			475												547				1649	1207																	
WMCA-604		763	1411											687	1503		350		2512	2205	1625	179		434	378	293	349	4x103	3x109	11	11	14-ø10		100	*		
WMCA-622			885											932	973				2194	1722	1000	143															
WMCA-642		1006	1039												1127				2348	1876	1175																
WMCA-661		1143	500	130	200	175	245	20						1067	592	190	365	80	1963	1422	1075	160	23													10	#
WMCA-662			1125												1217				2588	2047	1275																
WMCA-681			628											1240	720				2284	1657																	
WMCA-701		1316	675												767		400		2331	1704	1250	180		856	800	398	454	6x139	4x108	11	11	20-ø10		200			

FLANGE DIMENSIONS ARE AS PER BS :4504 FOR 16 BAR PRESSURE.
* FLANGE DIMENSIONS ARE AS PER BS :4504 FOR 25 BAR PRESSURE.

01	D-128-2005	SIZE WMCA-542,562 ADDED							
00	G-223-2005	NEW RELEASE	SKS	22.9.05	DATE	DRAWN	CHECKED	APPROVED	SHEET NO.
ALT NO.	ALT NOTE NO.	ALTERATION	SIGN	DATE	22.9.05	SJ		SKS	1
									NO. OF SHEET
									1

FILE LOCATION :- \\C-91\E\VOL.2.2\DIMENSIONAL DRAWING\WMCA\WMCA SERIES DD.dwg